

SmartCheck Integrated Fiber Endface Inspector



SmartCheck inspection instruments launched by Dimension Technology. It features automatic analysis, automatic focusing, and automatic measurement, enabling fully intelligent testing. With high accuracy and high efficiency, Smartcheck has become a new benchmark in the fiber inspection industry.

Main Features

- Automatic analysis, automatic judgment, automatic focusing, and automatic fiber switching
- Measurement of 12-fiber multi-core connector end faces takes only 5 seconds
- Easy switching between PC and APC connectors
- Various fixtures accommodate testing for different products
- Generate detailed reports for easy data recording

Applications

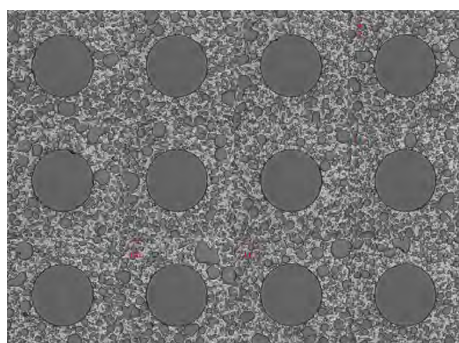
- Single and multi-fiber connectors
- Multi-fiber module

Easy to operate, test takes only 5 seconds

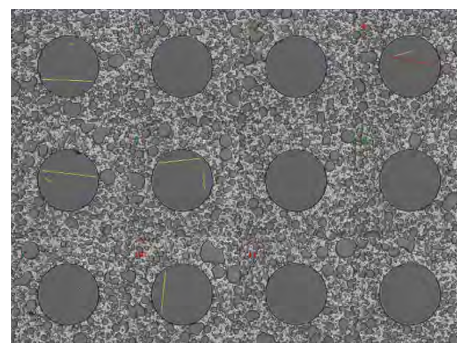
SmartCheck boasts outstanding software algorithms and is user-friendly, capable of distinguishing the smallest scratches and dirt spots on the fiber end face; the analysis time for 12-core products is only 5 seconds, improving the testing efficiency and accuracy of inspection operations.

Automatic analysis function to automatically identify defects on the fiber end face

SmartCheck features automatic analysis, automatic focusing, automatic fiber switching, and automatic determination of fiber end faces, making the testing of multi-core connector end faces intelligent and effortless.

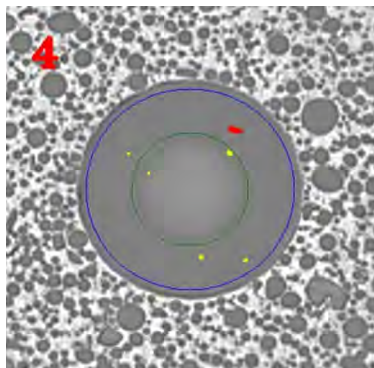


Automatic analysis



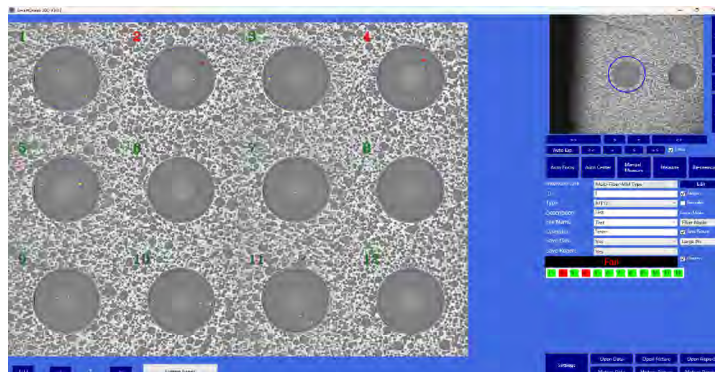
One-click operation, fully automated testing process

With well designed optical system and fully automatic testing process, Smartcheck only needs 5s to test MT12 connectors efficiently.



Clear imaging and stable data connection

After inserting the fiber connectors, Smartcheck can test all the endface up to 72 core fibers just in one-click on "Measure" button.



Professional fixture platform, compatible with mainstream testing scenarios

SmartCheck boasts outstanding software algorithms and is user-friendly, capable of distinguishing the smallest scratches and dirt spots on the fiber end face; the analysis time for 12-core products is only 5 seconds, improving the testing efficiency and accuracy of inspection operations.



Professional fixture platform, compatible with mainstream testing scenarios

SmartCheck has default end face evaluation Settings that meet IEC requirements and can generate customized test standards to meet customer needs. Whether it is the A, B and C zones on the end face of the optical fiber, or the number of spots, the width and length of scratches, they can all be adjusted as needed, which greatly improves the production efficiency. For each test, SmartCheck will automatically generate a detailed Excel report on the end face condition.

Specifications

Item	Parameters		
Type	400X	200M	200M8
Magnification	20X	10X	10X
Resolution	0.27um	0.54um	0.54um
Testing Connectors	Singer fiber, MTRJ, MPO, MTP(2-72 core)	Multi-core optical module	400G/800G module
Testing Speed	5s (12 core,excluding the auto focusing time)		
Scan Distance	6mm×5mm	6mm×3mm	8.6mm×4mm
Data Link	USB 2.0		
Power Supply	DC 24V		

Dimension Technology Co.,Ltd

Tel: +86 755-26480850

Email: sales@dimension-tech.com

Web: www.dimension-tech.com